

Small is BIG



SMD PCB Terminal Blocks

2059 Series – low profile, 3mm pad spacing

- SMD Terminal Blocks with PUSH WIRE® connection
- Inserting solid conductors via push-in termination
- Easy conductor removal, via operating tool
- A total height of only 2.7 mm
- Group arrangement is possible without losing any poles
- Delivery in tape-and-reel packaging for automated assembly

Technical Data

Pin Spacing	3mm 0.118 in		
Rating per	IEC/EN 60664-1		
Overvoltage Category	III	III	II
Pollution degree	3	2	2
Rate voltage	63 V	160 V	320 V
Nominal Current	3 A	3 A	3 A
Approvals per	UL 1977 (pending)		
Rated voltage, 1-pole	600 V		
Rated voltage for 2 poles and more	250 V		
Nominal current UL	3 A		

Conductor Data:

Connection technology	PUSH WIRE
Conductor size: solid	0.14 - 0.34 mm ²
AWG: solid or pre-bonded	26-22 AWG
Strip length	4 - 5.5 mm / 0.16 - 0.22 in
Conductor entry angle	0° to PCB

Material Data:

Material Group	I
Insulating material	Glass fiber-reinforced polyphthalamide (PPA-GF)
Flammability rating per UL 94	V0
Lower/Upper temperature limit	-60°C / +105°C
Contact plating	tin-plated

2059 Series accessories

Operating tool 206-859
Operating tool 2059-189

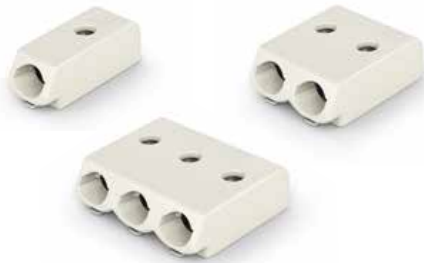
Application Notes:

Suitable for lead-free, reflow-soldering profiles acc. to DIN EN 61760-1 and IEC 60068-2-58 up to max. 260°C peak temperature. Due to customer specific variables (e.g., component configuration and orientation, type of soldering machine, solder paste), it is recommended that trial runs are conducted to ensure product and process compatibility under actual manufacturing conditions.

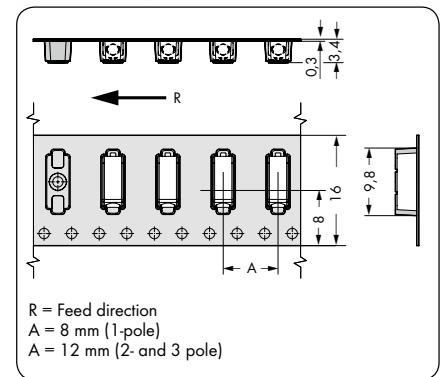
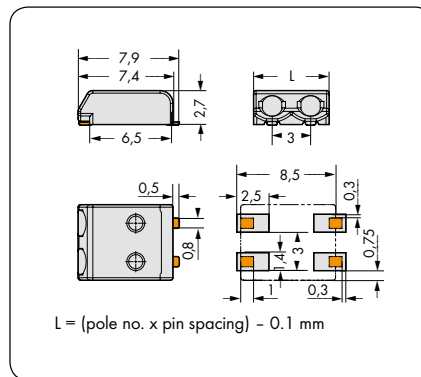
Recommendation for stencil: Material thickness, 150µm. Stencil layout identical to pad layout.

Pin Spacing 3 mm / 0.118 in

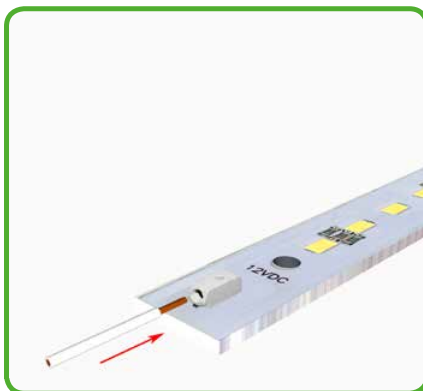
0.14 - 0.34 mm ² "sol."	AWG 26-22 Solid or pre-bonded	
160 V / 2.5 kV / 2.3 A	1p	2p & 3p
	600V	250V/3A



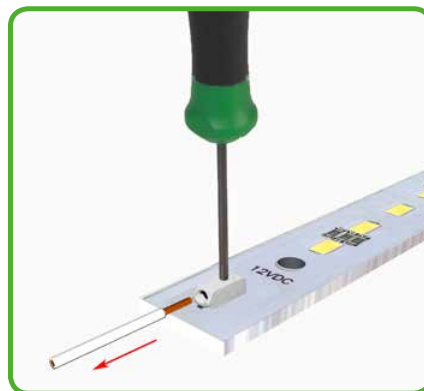
Pole No.	Item No.	Pack. Unit
SMD terminal blocks in tape-and-reel packaging white*		
1	2059-301/998-403	31800 (12 x 2650)
2	2059-302/998-403	21000 (12 x 1750)
3	2059-303/998-403	21000 (12 x 1750)
Reel Diameter: 330 mm		



* Depending on reflow soldering temperatures and times, color deviations may occur. These deviations will have no impact on functionality.



Inserting solid conductors via push-in termination.



Easy conductor removal, e.g., via 206-859 operating tool.