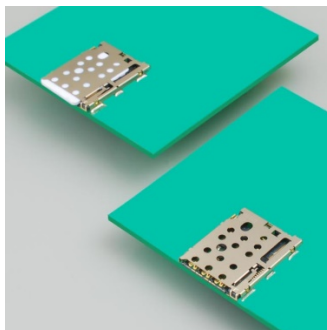


## SF72 Series nano SIM Card Connector



### Outline

Connected devices such as smartphones and tablets that equip nano SIM (4FF SIM) cards are increasing. The SF72 Series is a compact and reliable push-push type nano SIM card connector ideal for various handheld/portable applications.

### Features

- Smallest-in-class dimensions including height --- 1.25mm height, 11.2mm width, and 14.35mm depth.
- Good operability with enlarged card eject length (3.9mm).
- Card mis-insertion measure that does not lock if card is mis-inserted.
- Card detection switch (normal open).
- EMI countermeasure - balanced 8 hold-down points.
- Supports automated mounting - supplied in embossed tape.

### General Specifications

<b># of contacts</b>	2 positions
<b>Current Rating</b>	0.5A/terminal
<b>Voltage Rating</b>	10V/terminal
<b>Contact Resistance</b>	100 milliohm max. (initial)
<b>Dielectric Withstanding Voltage</b>	AC 500 Vr.m.s. for 1 minute
<b>Operating Temperature Range</b>	-25°C to +85°C

### Technical Resources

[Drawings/Data Sheets](#)

[Environmental Compliance](#)

[3D](#)

[Component Product Information](#)

For any questions regarding this matter, please contact your JAE account manager.  
Thank you for your cooperation.