



MM60-G1 Series Display Mini Card Connector

Connector Training Module

Application Examples

- Wireless HDTV
- Wireless HD PC monitor
- Wireless HD Transceiver
- Wireless HD Transmitter
- Wireless HD Receiver
- Wireless Blu-Ray Player
- Wireless Internet Content Streamer, etc



MM60-76B2-G1 Overview

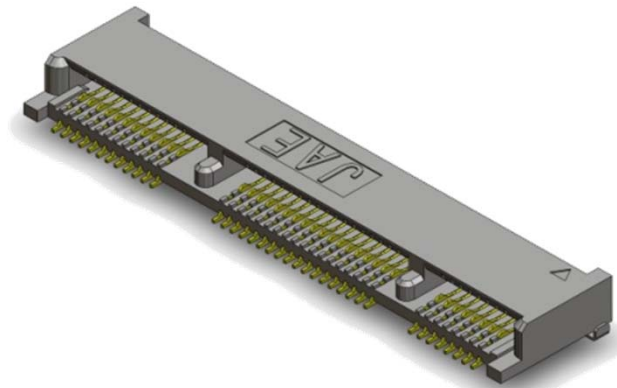
JAE Display Mini Card Connector MM60-76B2-G1 is a solution to support the growing demand of Wireless High Definition Audio Video applications. It is based on PCI Express specifications standardized by the PCI-SIG. It can be used for connections with PCI Express card and USB signal transmission modules.



MM60-76B2-G1 Features

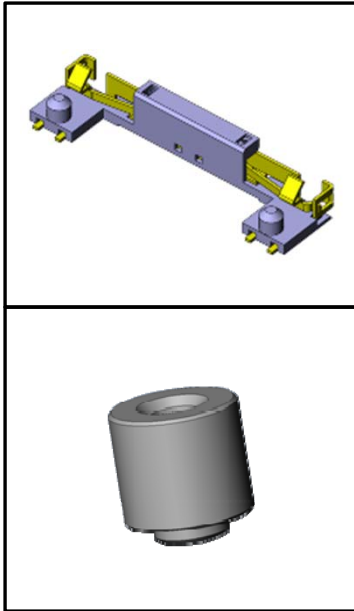
Space-saving FPC Connector

- JAE MM60-76B2-G1 is a module socket compatible with specifications standardized by PCI-SIG
- PCI Express Mini Card Electromechanical SPEC Compliance
- Can be used for connection with PCI Express and modules for USB 2.0 transmission
- DisplayPort Specifications Compliance



MM60-76B2-G1 Features

Mounting Options



- 2 SMT mounting card hold down options are available
 1. Automatic latch type
 2. screw nut type
- Automatic latch type – no tool is needed
- Screw nut type – compatible with widely available M2 threaded screw

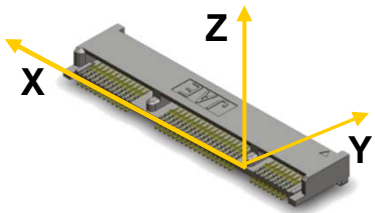
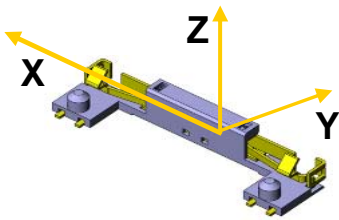
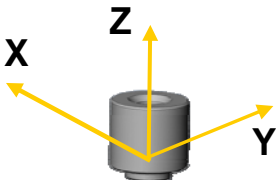
Connector	Stacking height	Automatic Latch	Screw nut
MM60-76B1-G1	4.0 ± 0.2	MM60-EZH039-B5	NT1

General Specifications

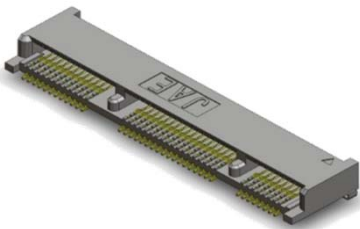
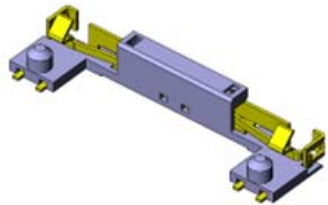

Number of Contacts	76 pos.
Pitch	0.8mm
Contact Resistance	60m Ω max (initial)
Dielectric Withstanding Voltage	AC 300Vr.m.s (per minute)
Operating Temperature Range	-40°C to +85°C
Rated Current	0.5A per pin
Life Cycle	50 times
Insertion Loss	-1dB min. (1.25GHz max.) / -5dB min. (3.75GHz max.)
Return Loss	-12dBmax. (1.3GHz max.) / -7dB max. (2GHz max.) / -4dB (3.75GHz max.)
Cross Talk (near end)	-32dB max. (1.25GHz max.) / -26dB max. (3.75GHz max.)

Basic Dimensions

Unit: mm

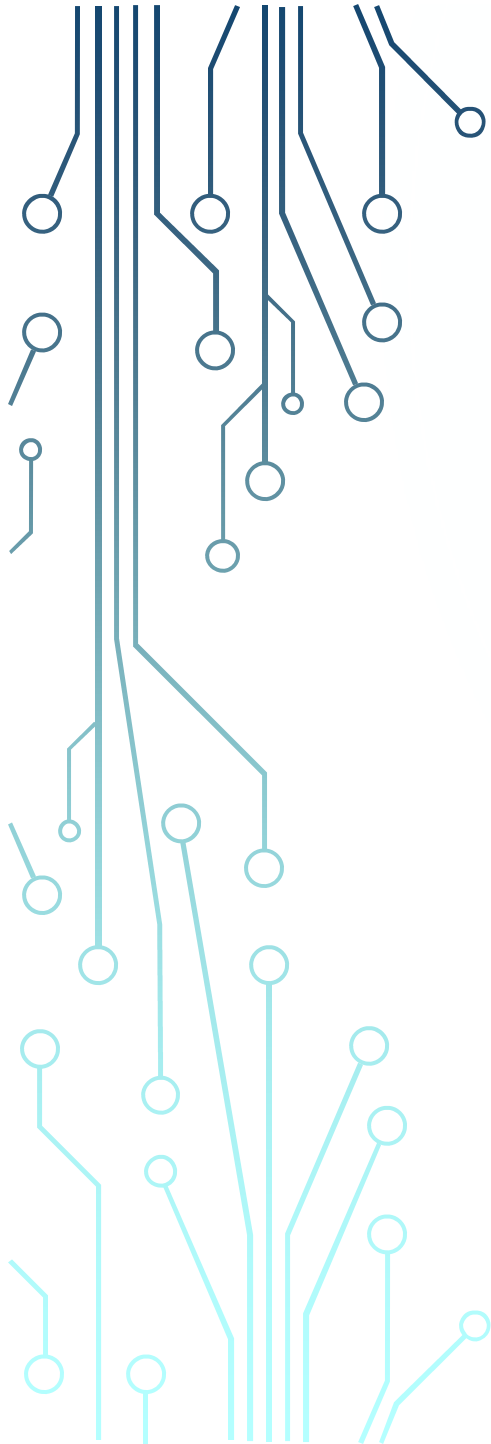
	Connector	Latch	Screw Nut
			
Z (Height)	4.0	4.8	2.15
X (Length)	44.3	29.0	4.0
Y (Depth)	9.6	7.9	4.0

Materials and Finishes

Connector 	Component	Material / Finish
	Contact	Copper alloy/Contact area: Au plating over Ni Terminal area: Au flash over Ni
	Insulator	Heat resistant material (UL94V-0)
	Hold down	Copper alloy / Sn plating
Latch 	Component	Material / Finish
	Contact	Stainless steel / Sn plating
	Insulator	Heat resistant material (UL94V-0)
Screw Nut 	Component	Material / Finish
	Main body	Brass / Sn plating

Summary

- JAE's MM60-76B2-G1 is a display mini card connector.
- A module socket compatible with specifications standardized by PCI-SIG
- PCI Express Mini Card Electromechanical SPEC Compliance
- Can be used for connection with PCI Express and modules for USB 2.0 transmission
- DisplayPort Specifications Compliance
- MM60 connectors use UL approved heat resistant material



Technology to Inspire Innovation

JAE