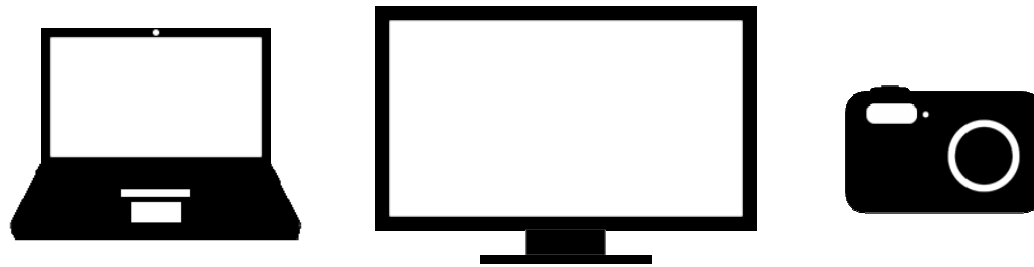


PC2 Series Board-to-Cable Connector

Connector Training Module

Application Examples

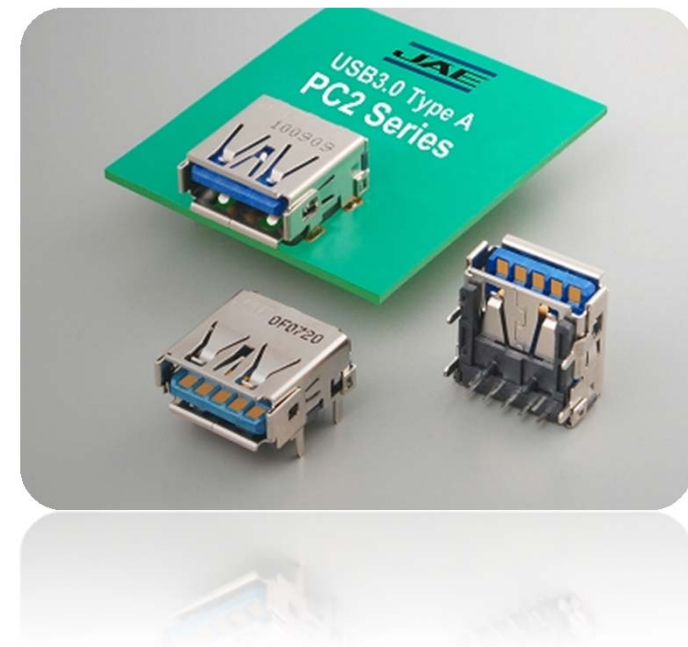
- PC
- TV
- Set Top box
- Other consumer devices



PC2 Series Features

High Speed Performance Board-to-Cable Connector

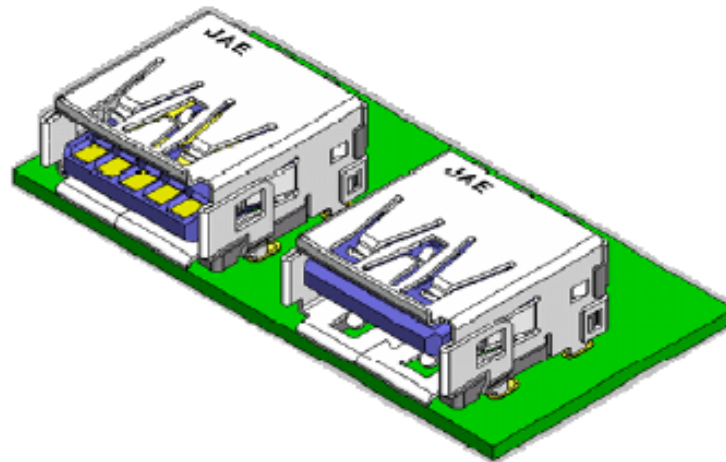
- Compatible with USB 3.0 transmission, standardized by USB-IF* (Transmission speed: 5 Gbps)
- 4-point soldering through-hole hold downs on shell for retention strength
- Compact size allows greater design flexibility
- Standard & Reverse Mount types available
- Receptacle is supplied in embossed tape to accommodate automated mounting



*USB-IF: Universal Serial Bus-Implementers Forum

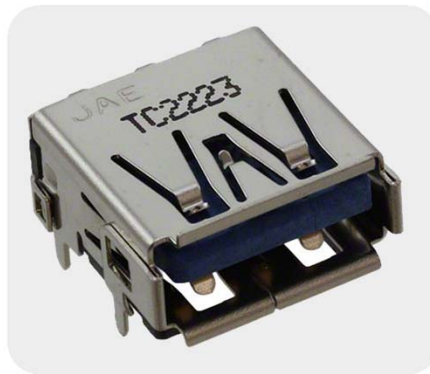
General Specifications

Number of Contacts	9
Mounting Type	Standard/ Reverse
Contact resistance	Power: 30m Ω max. Signal: 50m Ω max.
Insulation Resistance	100m Ω min (after test)
Dielectric Withstanding Voltage	AC 500Vr.m.s (for 1 minute)
Operating Temperature Range	-20 to +80°C
Current Rating	Power: DC 1.8A max. per terminal Signal: DC 0.25A max. per terminal



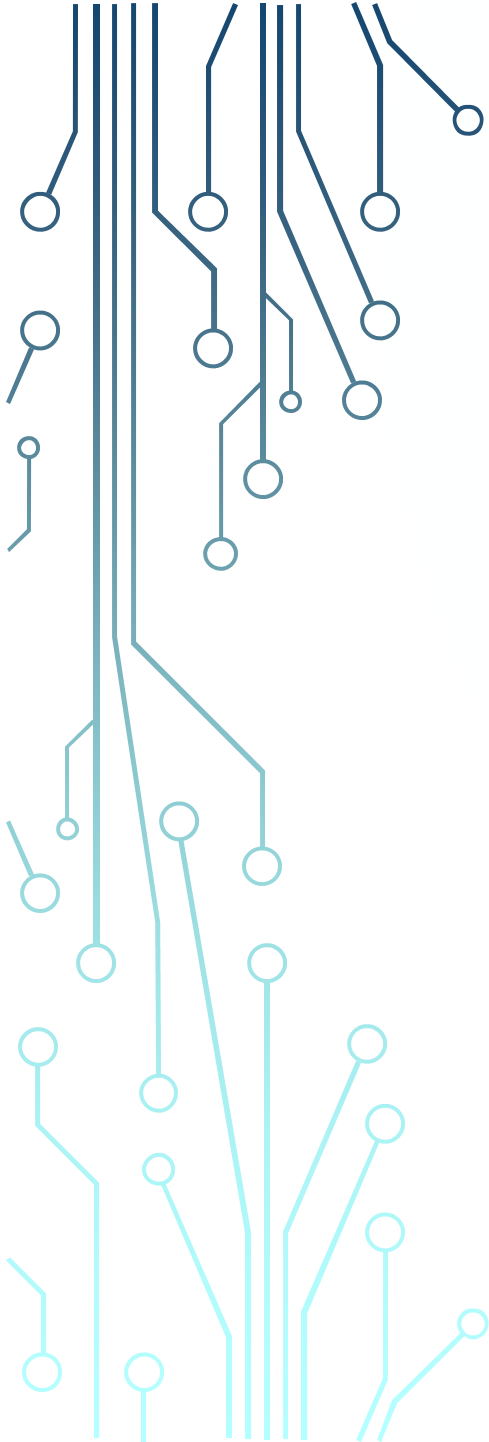
Materials and Finishes

Component	Material / Finish
Shell	Stainless steel / Ni plating
Contact Contact Area Terminal Area	Copper alloy / Au (0.05m Au) over Pd-Ni alloy plating Copper Alloy/ Sn plating over Ni
Insulator 1	Glass filled LCP
Insulator 2	Glass filled Nylon



Summary

- Compatible with USB 3.0 transmission, standardized by USB-IF
- The PC2 series has four-point soldering through-hole hold downs
- Standard and Reverse Mount types are available
- The PC2 series has nine contacts, with a contact resistance of 30 m Ω maximum for power, and 50 m Ω maximum for signal.



Technology to Inspire Innovation

JAE