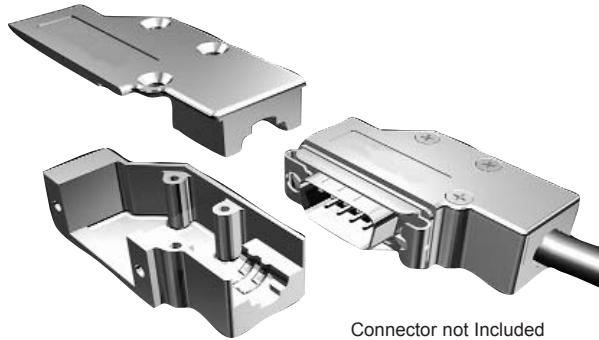


CME SERIES - METAL ETHERNET RIGHT ANGLE 9 POSITION - LOW PROFILE COVER



Connector not Included

FEATURES:

- Provides Excellent Shielding Characteristics.
- Ultra-Slim Design Fits Easily In Confined Areas.
- Tapped Holes for Rapid Assembly.
- Custom Logo Available. Subject To Minimum Order Quantity.

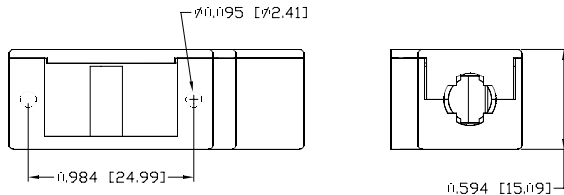
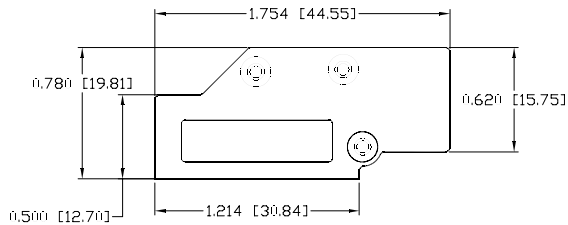
SPECIFICATIONS:

Cover Material: Die-Cast Zinc.

Plating: Clear Zinc Chromate.

Hardware: #2-56 Machine Screws.

(Hardware Accessories Sold Separately)



PART NUMBERS - NO LOGO

Bulk: A30600000

Pkg: C88600000