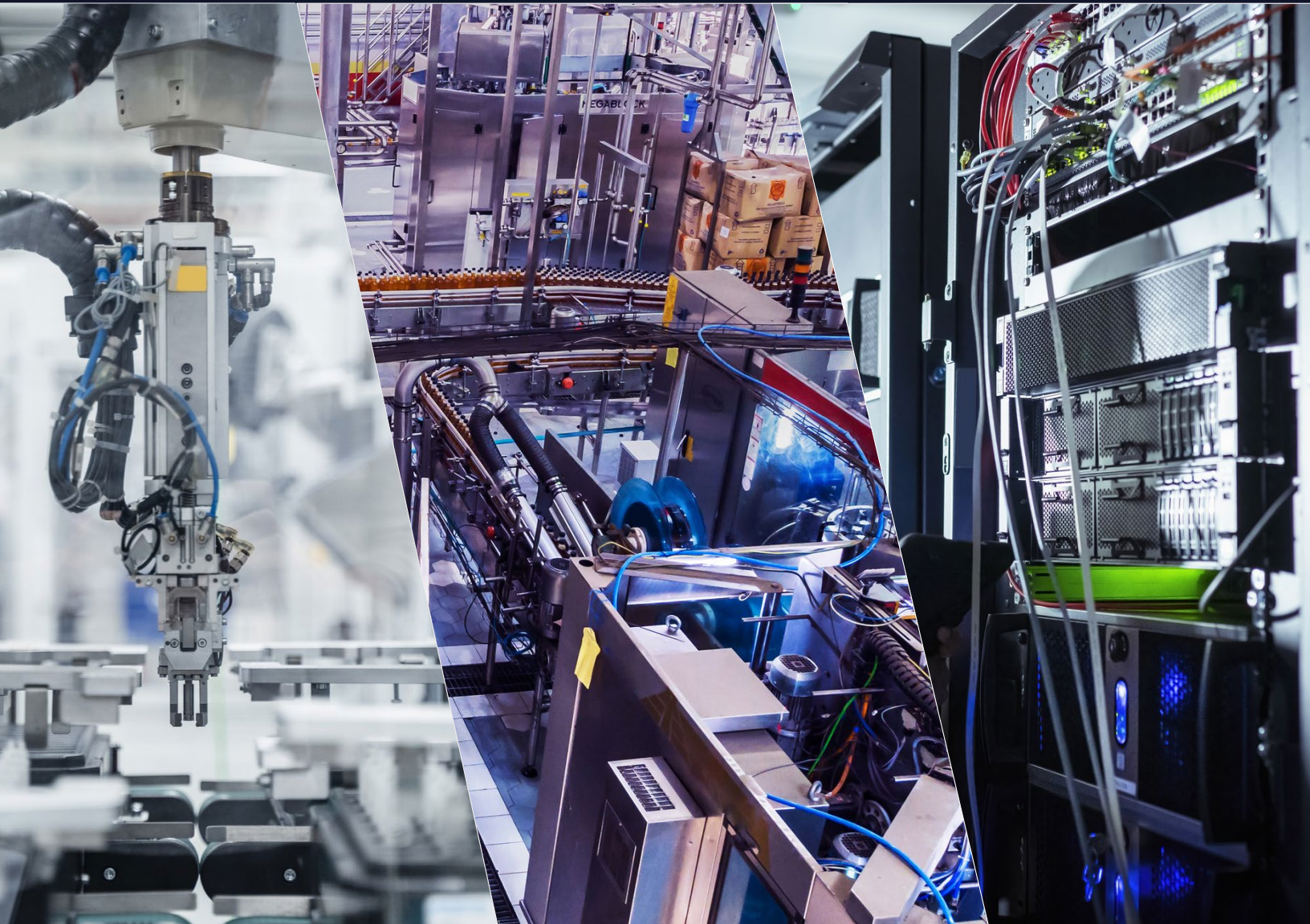


NEW PRODUCT INTRODUCTIONS ANNUAL OVERVIEW





molex

Discover Molex

Molex believes in the transformative power of creating connections. As a leading global provider of connector solutions, Molex brings engineering excellence, trusted relationships and an unparalleled commitment to quality and reliability to help customers across industries improve lives. Heilind and Molex are working together to bring you expert product, technical support and a portfolio of 100,000+ innovative products.

HEILIND



New Product Introductions

In this overview you will find a summary of each NPI package released in 2023, including new additions to the Molex portfolio as well as extensions to established product ranges. To 'Learn More' on each product page visit <https://www.heilind.com/cms/manufacturers/molex/> to view resources, including datasheets, videos and more.

USEFUL LINKS

Shop Molex

Molex is driving innovation across a wide range of industries – view our manufacturer's page to learn more about Molex's solutions for markets such as telecom, automotive, consumer, medical and more.

The Future of Driving

With a growing portfolio of interconnects, Molex is equipped to bring new designs to life and advance the future of driving. Heilind and Molex are working together to bring you expert product and technical support to take your designs from the factory floor to the road.

New Product Announcements

Learn more about Molex's portfolio of new additions released over the years including access to datasheets, videos and more.

Molex Video Spotlight Showcase

Learn more about some of Molex's top products in this featured video showcase.

HEILIND

Table of Contents

INNOVATION

5G25 Series, 5GmmWage RF Flex-to-Board Connectors	7
PowerWize BMI (Blind-Mate Interface) High-Current Panel-to-Board/Busbar Interconnects	8
SW1 High-Current Wire-to-Board and Busbar Interconnects	9
High-Frequency Precision Test Adaptors	10
Brad M12 L-Code Connector System	11
Compactus Sealed Hybrid Connectors	12
RFID Asset Tracking Solutions	13
Single-Pair Ethernet (SPE) T1 Industrial Connectors and Cable Assemblies	14

ENHANCEMENT

Ultra-Fit Power Connectors, Wire-to-Wire	15
Squba Weather Caps	16
MHF® 4L LK and MHF® I LK Cable Assemblies	17
Easy-On FFC/FPC Connectors FD4P Series	18
EXTreme Guardian HD Power Connectors	19
SlimStack Board-to-Board Battery Connector GCB7V, 0.35mm, 18A	20
Brad M12 Ultra-Lock 2.0	21
Loxon Locking Quick Disconnect (QD) Terminals	22
Squba 3.60mm-Pitch Sealed Wire-To-Wire Connector System Colors	23
Mini-Lock 2.5 - Adding Black color and Glow Wire Versions	24
RAST R-Power Connector Systems	25
Micro-Lock Plus 1.25mm-Pitch - Adding TPA	26
Micro-One Through-Hole Connectors	27
Micro-Lock Plus 2.00-Pitch - Adding Gold plating	28
Brad EtherNet/IP CIP Safety HarshIO Modules - Adding Commercial-Grade	29
Micro-Fit+ Single-Row, Wire-to-Wire Connectors	30

EXTENSION

EXTreme Guardian Plug-Side Overmolded Cable Assemblies	31
Off-the-Shelf (OTS) SL Pre-Crimped Leads	32
Mini-Fit Max Single Row Connectors	33
Pico-EZmate 1.80mm High-Current Wire-to-Board Connectors	34
Application Tooling	35
Off-the-Shelf (OTS) PowerWize Cable Assemblies	36

EXTENSION

Off-the-Shelf (OTS) PowerWize Pre-Crimped Leads _____	37
USB Type-C Connectors _____	38
Premo-Flex FPC 0.50mm-Pitch One-Touch LVDS Jumper Cables with Latching Notches _____	39
EXTreme Ten60 High-Power Connectors, Split-power _____	40
Off-the-Shelf (OTS) iGrid Cable Assemblies _____	41
Off-the-Shelf (OTS) CLIK-Mate 2.0 Cable Assemblies _____	42
SlimStack Board-to-Board Connector ACB6+, 40Ckt _____	43
Sentrality High-Current Pin and Socket Interconnect System _____	44
Optical Splice Protection Sleeves _____	45
Micro-Fit+ Connector, SMT Header Assemblies - Extended sizes _____	46
Off-the-Shelf (OTS) CLIK-Mate 1.25 Cable Assemblies _____	47
MX150 Hybrid Sealed Connector System, adding Hybrid Mat-Sealed Blade Connectors _____	48
Premo-Flex (FFC) Ultra-Flexible Cable Jumpers _____	49
Off-the-Shelf (OTS) MX64 Pre-crimped Leads _____	50
Off-the-Shelf (OTS) Mini-Fit Versa Cable Assemblies _____	51
Premo-Flex FFC Superior Retention Cable Jumpers _____	52
Off-the-Shelf (OTS) Micro TPA 2.00mm Cable Assemblies _____	53
Off-the-Shelf (OTS) Stac64 Pre-Crimped Leads _____	54
Off-the-Shelf (OTS) SW1 Cable Assemblies _____	55
Off-the-shelf (OTS) Mini-Fit Max Pre-Crimped Leads _____	56
Zero-Hachi 0.80mm Pitch Wire-to-Board Connector System - Adding Gold Plating _____	57
Solderless RF/Microwave PCB Connectors _____	58
Micro-Fit + Versa Connectors _____	59
Off-the-Shelf (OTS) Zero-Hachi Pre-Crimped Leads _____	60
Micro-Lock Plus 1.25mm-Pitch Connector - Adding Through-Hole Header Housing _____	61
Off-the-Shelf (OTS) KK Plus 250 Discrete Wire Cable Assemblies _____	62
Off-the-Shelf (OTS) Mini-Fit Max Cable Assemblies _____	63
Off-the-Shelf (OTS) Micro-Fit Plus Pre-Crimped Leads _____	64
PowerWize BMI (Blind-Mate Interface)	
High-Current Panel-to-Board/Busbar Interconnects - Adding 8mm sizes _____	65
Q1 2024 NPI Pipeline _____	66

NEW PRODUCT INTRODUCTION:

Program Categorization

Over the last decade, Molex has launched and nurtured a New Product Introduction program that is now considered best-in-class by those it was created for – our distribution partners.

Each year we have released an average of 50 NPIs to the channel. From innovative launches that the market had never seen, to continuing to strengthen our core ranges through necessary expansions, our commitment to developing a pipeline of new and exciting products has never faltered.

After reflecting on our success so far and taking on valuable feedback from our network, Molex launched an enhanced version of our historic program with the aim of better communicating each product launch to our distributors.

Introducing our categories

The categorization of our NPIs is an opportunity to strengthen our existing program and provide further value to our distributors. At Molex, we feel that this improvement to our program will better equip our distributors to understand, onboard, and sell our new products – with the aim of driving profitable growth for all.

INNOVATION

New to Molex, or new to market

ENHANCEMENT

New variations of an existing product range

EXTENSION

Additions to complete an existing range



What can you expect?

- Detailed explanation on the type of NPI being launched
- Product presentations for each 'innovation' release
- Complete data sets including UoM, packaging specifications and product dimensions



[View our video from Fred Bell, VP Global Distribution, to learn more about the categorization of our New Product Introductions.](#)

www.molex.com

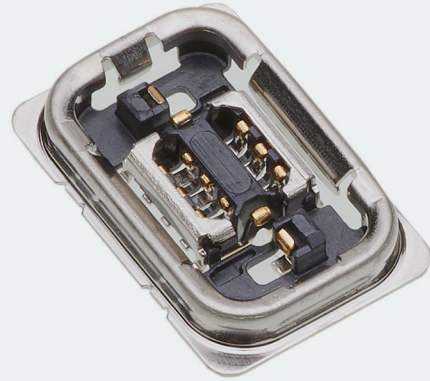
Molex is a registered trademark of Molex, LLC, in the United States of America and may be registered in other countries; all other trademarks listed herein belong to their respective owners. Order No. 987652-6052 ©2023 Molex



INNOVATION

5G25 Series, 5GmmWave RF Flex-to-Board Connectors

SERIES
218876, 218877



The 5G25 RF Connector has a dedicated RF structure that supports up to 25 GHz for superior SI performance, a full-shielding design to reduce electromagnetic interference (EMI), and shielded parts around the perimeter and grounding cover to protect signal terminals and ensure robustness. Furthermore, wider alignment allows for proper mating position and helps prevent any mis-operation.

This new connector is ideal for use in consumer applications where designers want to leverage industry-leading 5G connectivity technologies, as well as defense, industrial and medical device applications where high signal integrity (SI) performance is required for mission-critical 5G applications.

FEATURES

Unique contact design of RF terminal

Superior shield design enables industry-leading SI performance up to 25 GHz

Wide alignment tolerance of 0.30mm pitch / 0.30mm span facilitates proper alignment and mating

MARKETS



Industrial



Consumer



Medical
Devices



Defense

LEARN MORE



INNOVATION

PowerWize BMI (Blind-Mate Interface) High-Current Panel-to-Board/ Busbar Interconnects

SERIES

215510, 215511, 215513, 204608



PowerWize BMI High-Current Panel-to-Board/Busbar Interconnects incorporate Molex's COEUR socket technology, which helps ensure low contact resistance at the mating interface to minimize heat generation and enable high current-carrying capacity.

Suitable for diverse range of applications such as data center, alternative energy and EV charging stations, the blind-mating design helps ensure accurate mating in hard-to-reach and visually obscured spaces.

FEATURES

Mechanically keyed to prevent attachment of cable assemblies to the panel upside down

Blind-mating guideposts

Low Contact Resistance

Optimal current-carrying capacity with multiple contact beams

MARKETS



Electric Vehicle
Charging Stations



Telecommunications
/ Networking



Data Center
Solutions

[LEARN MORE](#)



INNOVATION

SW1 High-Current Wire-to-Board and Busbar Interconnects

SERIES

218371, 218372, 218373,
218335, 218336, 216939



Featuring innovative COEUR socket technology in three sizes: 6.00mm (120.0A), 8.00mm (185.0A) and 11.00mm (300.0A), SW1 Wire-to-Board/Wire-to-Busbar Interconnects offer power efficiency, reliability and design flexibility. With minimal heat generation and low contact resistance, this product delivers high-current carrying capacity up to 300A.

Their compact design is 35% lower in height and 30% shorter than competitive products, while the user-friendly positive-locking design ensures secure mating during system integration. With options for attaching pins to different substrates and a high-quality 8-sided crimp profile, SW1 interconnects provide design flexibility and reliability.

FEATURES

Low contact resistance

Compact design

User-friendly positive locking

Positive locking with 360° cable assembly rotation

Color coded receptacle housings

Reliable crimp geometry with high-quality 8-sided crimp profile

Multiple contact beams with optimal current-carrying capacity

MARKETS



Industrial
Automation



Energy Storage

LEARN MORE



INNOVATION

High-Frequency Precision Test Adaptors

SERIES

73164, 73386, 73157, 73387, 73252



In test and measurement applications, finding the right adapter for your needs can be challenging. The new High-Frequency Precision Test Adaptors from Molex provide an off-the-shelf solution, with a broad range of high-frequency within series and between series adapters. Interfaces include 2.92mm (40 GHz), 2.4mm (50 GHz), 1.85mm (67 GHz) and 1.0mm (110 GHz). These tested and proven high-frequency adapters deliver outstanding performance to ensure accurate, reliable results.

FEATURES

Intermateability

Within and between series available

Precision machines interfaces

Excellent electrical performance

Wide frequency range

MARKETS



Aerospace



Telecommunications
/Networking



Internet of
Things (IoT)

LEARN MORE



INNOVATION

Brad M12 L-Code Connector System

SERIES

120500, 120501, 120502, 120504, 120505



Introducing the Brad M12 Power L-Code Connector System – the ultimate solution for Industry 4.0 electric propulsion needs. Meeting PROFIBUS and PROFINET International (PI) standards for PROFINET systems, this compact yet powerful connector delivers up to four times the power of standard M12 connectors, making it ideal for high-power applications. With an IP67-sealed interface, this connector enhances protection against dust and water ingress, while the Weld-Slag and Oil-Resistant (WSOR) cables provide additional protection against even the harshest environments, ensuring durability and reliability for a connection that lasts.

The connector is designed to establish an open industry connector standard, allowing for compatibility with a wide array of platforms and manufacturers. This makes it a versatile and effective solution across multiple applications and industries.

FEATURES

IP67-sealed interface

63V AC/DC; up to 16.0A current per pin

Pins enclosed in contact carrier

L-Code mating interface

Products developed according to IEC Standard 61076-2-111

PI Selected

MARKETS



Industrial
Automation

[LEARN MORE](#)

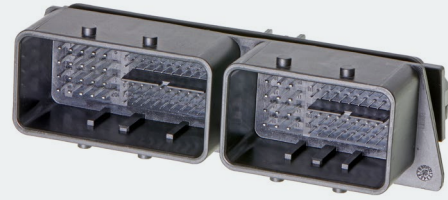


INNOVATION

Compactus Sealed Hybrid Connectors

SERIES

503131, 560132, 560134, 560138, 560144,
560145, 560151, 560152, 560153, 560154,
560155, 560189, 560190, 560191



Compactus Sealed Hybrid Connectors combine excellent electrical performance, rugged reliability and advancements in miniaturization to provide a space-saving and flexible connection solution suited to a variety of applications. Offering a 20% space saving compared with 0.64mm terminals, the Compactus 0.5mm terminals are robust, high-density, automotive-grade, IP69K-rated connectors that permit manufacturers to fit more power and signal transmission ability into a small space.

FEATURES

Heat resistance, sealing property and vibration resistance

Left and right flexible cable outlet directions

Three terminal sizes available in one connector (0.50, 1.00 and 2.80mm)

Short and long wire dress cover options

Three header sizes (128, 146 and 186 circuits) and five receptacle sizes (48, 66, 72, 80 and 114 circuits) available

0.50mm terminal system

Header connector size comparison: 0.50 vs. 0.64mm

Designed for thin wires

MARKETS



Commercial
Vehicle



Automotive

[LEARN MORE](#)



INNOVATION

RFID Asset Tracking Solutions

SERIES

13509, 13510, 13511, 13512, 13513, 13514,
13515, 13516, 13517, 13518, 13519, 13520,
13521, 13522, 13523, 13524, 13525, 13526,
13527, 13528



Molex's Asset Tracking Solutions offer RFID tags in a variety of frequencies and designs to enable cost-effective, versatile, efficient and accurate monitoring of valuable inventory and assets.

High Frequency

Molex high-frequency (HF) RFID solutions offer versatile identification capabilities for asset tracking. HF RFID tags are available in multiple sizes and configurations, including cable ties and labels, for use in a variety of industries, applications and environments.

Ultra-High Frequency (Global)

Molex offers global standard ultra-high frequency (UHF) RFID solutions with a frequency range from 860 to 960 MHz. UHF RFID tags have a much longer read range than HF tags and are available in multiple package sizes, which accommodates a wide range of markets and applications.

Ultra High Frequency (USA)

Molex offers USA standard ultra-high frequency (UHF) RFID solutions with a frequency range from 902 to 928 MHz. UHF (US) RFID tags are available in multiple package sizes, which accommodates a wide range of markets and applications.

FEATURES

53 X 44 RAIN RFID TAG FOR METAL SURFACES:
IP68 Rating

Tags in Multiple Package Sizes

FLEXIBLE RFID TAG FOR NON-METAL SURFACES:
Global Frequency

Customizable Appearance

MARKETS



Industrial



Automotive



Healthcare

[LEARN MORE](#)



INNOVATION

Single-Pair Ethernet (SPE) T1 Industrial Connectors and Cable Assemblies

SERIES
220957



Industrial SPE Connectors and Cable Assemblies afford the standard T1 industrial interface and single-twisted-pair cabling to make Ethernet connectivity easy and affordable, support miniaturization and enable the transmission of data from the cloud to devices and sensors.

FEATURES

Preassembled cable assemblies available

Cable assemblies use only 1 twisted-pair with a gauge as small as 26 AWG and 22 AWG

Through-hole jack with two contacts plus shielding

Halogen-free, oil-resistant, flame-retardant off-the-shelf cable assemblies

End-to-End TCP/IP-Based Communication

Cable assemblies enable the transmission of data using only two wires and the simultaneous power supply for terminals via PoDL up to 50W

Plug, jack and cable assembly with IP20

MARKETS



Internet
of Things



Industrial
Automation



Commercial
Vehicle

LEARN MORE



ENHANCEMENT

Ultra-Fit Power Connectors, Wire-to-Wire

SERIES
216945, 216946, 202569



With its unique keying design, Ultra-Fit Power Connectors offer up to 14.0A with a 3.50mm pitch to deliver high current capacity for wire-to-board and now wire-to-wire applications using the same amount of space that lower-current connectors occupy.

FEATURES

Multiple mechanical keying and color-coded options

17% reduction in pitch over similar power connectors

Optional TPA (Terminal Position Assurance) retainer

Ultra low mating force terminal

Positive-lock housing with anti-snap design

Fully isolated terminals

Terminal interface with six independent points of contact (split-box terminal design)

MARKETS



Medical



Consumer /
Home Appliance



Transportation



Industrial



Telecommunications
/Networking



Aerospace
and Defense

LEARN MORE



ENHANCEMENT

Squba Weather Caps

SERIES
220423, 220424



Choosing the right products for extreme environments can be arduous. The new Squba Weather Caps are designed to protect seals from damage during shipping, handling and use.

The Squba 1.80 and 3.60mm-Pitch Sealed Wire-to-Wire Connector Systems from Molex are made for harsh environments and feature an IP68-seal grade that has been approved by UL. Offering reliable connections and high-quality performance, they are ideal for space constrained applications.

FEATURES

Mated housings

Protected, low-profile positive latch

Weather caps

Sealed components with proven performance

Clean-body terminals

Voided circuit options (1.80mm-pitch version)

MARKETS



Consumer



Commercial
Vehicles



Industrial

LEARN MORE



ENHANCEMENT

MHF® 4L LK and MHF® LK Cable Assemblies

SERIES
73230



By combining Molex connector interfaces with MHF® locking plugs, Molex has introduced the MHF® 4L LK and MHF® I LK Cable Assemblies, available in multiple standard configurations. The robust locking system adds reliability and security for rugged RF applications that are continuously subjected to shock and vibration. The opportunities for this product are endless, ranging from consumer and MedTech, to commercial vehicles, aviation and beyond.

FEATURES

Standard, off-the-shelf availability
Speeds up time to market and eliminates tooling

MHF® connectors feature patented locking system
Makes the cable assembly ideal for applications with continuous shock or vibrations where reliable connectivity is essential

Standard MHF® receptacle
The locking cable assemblies mate with standard MHF® receptacles

MARKETS



Commercial
Aviation



Commercial
Vehicles



Consumer



MedTech



Data and
Computing



Mobile
Devices



Telecommunications/
Networkings

LEARN MORE



ENHANCEMENT

Easy-On FFC/FPC Connectors FD4P Series

SERIES
220363



High-density 0.40mm pitch FD4P series Easy-On FFC/FPC connectors offer a low-profile height of 2.00mm that can cover up to 120 circuits, providing high contact reliability and a high retention force, making them a versatile, space-saving solution for harsh environments.

FEATURES

High-density pin count

Space savings

Independent double-beam contact

Mating indication feature that gives operators visibility

MARKETS



IT Infrastructure
Solutions



Connected
Mobility Solutions



Home
Appliance

LEARN MORE

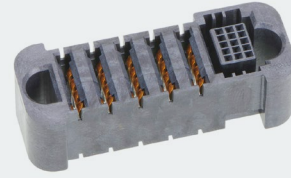


ENHANCEMENT

EXTreme Guardian HD Power Connectors

SERIES

219562, 219563, 219564



The new additions to the range of EXTreme Guardian HD Power Connectors offer configurable hybrid power/signal solutions with increased power in limited footprint spaces. These connectors provide more current in a low profile package for required space savings and design flexibility.

EXTreme Guardian HD Power Connectors are board-to-board and wire-to-board power connectors that provide dense high-current capacity in a low-profile package for complete design flexibility. New additions to the product line include power-only and power/signal hybrid connectors in various configurations. The design packs high power (up to 130.0A per blade) into a small form factor (5.15 and 5.78mm pitches available) to meet high-current needs in space-constrained PCB applications. Unitized housings also permit flexible layouts for power circuits, terminal lengths, signal lengths and guide options.

FEATURES

- Provides one of the greatest current density solutions
- Saves PCB space and allows for bias of 2.00mm in any direction
- Provides greater margin for customers' temperature designs
- Reduces PCB footprint compared to legacy power products
- Supports AC or DC high-voltage applications with the lowest feasible voltage drop and irreversible dissipative power losses

- Allows customers to configure their PCB to run AC or DC current with traces that follow their PCB layout; can use the circuits in parallel or as individual circuits

- Provides low interface resistance

- Offers flexible manufacturing options

MARKETS



Telecommunications/
Networking Automotive



Consumer



Medical



Industrial

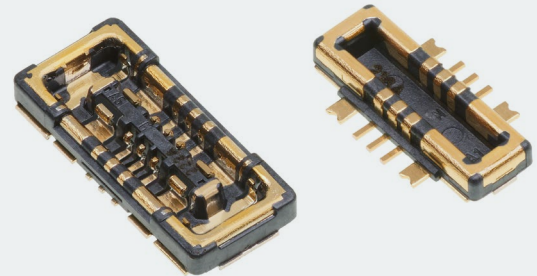
LEARN MORE



ENHANCEMENT

SlimStack Board-to-Board Battery Connector GCB7V, 0.35mm, 18A

SERIES
220250, 220251



Achieve up to 18.0A of power and electrical reliability in an ultra-compact design with SlimStack Hybrid Power Connectors, designed for battery and other power applications.

As consumers continue to demand smaller devices and bigger current value, the need for microminiature designs grows. Hybrid connectors deliver design flexibility while meeting tight-packaging needs.

FEATURES

Compact hybrid interface with power and signal contacts

Robustness with full metal cover

Dual-contact design

Delivers up to 18.0A power

Wide alignment area for secure mating

Armor nail prevents damage to housing

MARKETS



Mobile Devices



Medical Devices

LEARN MORE



ENHANCEMENT

Brad M12 Ultra-Lock 2.0

SERIES

120400, 120401, 120404, 120406



Since the introduction of the M12 there has been no real cost-effective alternative to the M12. What's more, there has been an increase in sensor and actuator demand due to an exponential increase in data/information. Designed to meet this demand, the Brad M12 Ultra-Lock 2.0 delivers increased productivity and cost savings while surpassing the performance and reliability of traditional threaded connectors. This product delivers high-flex and high-torsion performance, in addition to very reliable IP67 protection. Utilizing push-pull technology, the Brad M12 Ultra-Lock 2.0 offers easy assembly with a mechanical locking device for reliable, secure connections.

Female and male cordsets and receptacles meet the IEC 61076-2-010 standard and provide an easy-to-assemble interface.

FEATURES

Operator-independent connection

Universal, industry-standard M12 interface

Plastic housing and Zinc die-cast spring carrier

IP67 protection

Weld-slag, oil-resistant (WSOR) cable

MARKETS



Industrial
Automation

[LEARN MORE](#)



ENHANCEMENT

Loxon Locking Quick Disconnect (QD) Terminals

SERIES
19439



Loxon Locking Quick Disconnect (QD) Terminals with positive locking help ensure reliable connectivity and prevent loose connections or accidental separation in high-vibration or continuous shock applications.

Tin plating of the terminals after stamping helps prevent corrosion and eliminates un-plated (bare) edges for improved reliability. This product conforms to UL310 standard for optimal safety and performance and is glow-wire capable – meeting most customer requirements for use in harsh environments and white goods.

FEATURES

Tin plating of terminals after stamping

Conformance to UL 310 standard

Mating to 6.35 by 0.81mm male tabs with hole

Availability with three wire ranges

Housing available with 94V-2 or 94V-0 UL flammability rating and Glow Wire Capable

MARKETS



Consumer



Commercial
Vehicle



Telecom
Infrastructure

LEARN MORE

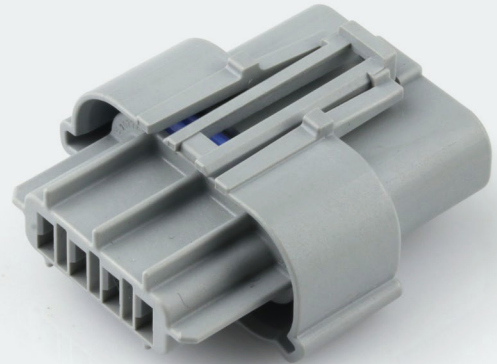


ENHANCEMENT

Squba 3.60mm-Pitch Sealed Wire-To-Wire Connector System Colors

SERIES

207778, 207781, 207782



Squba 3.60mm-Pitch Sealed Wire-to-Wire Connector Systems are designs that protect against ingress with an IP68-seal rating and carry up to 14.0A of current to deliver reliable power in a wide range of space-constrained applications.

The latest additions to the range include various color options for easy identification and to avoid mis-mating, plus a clip-slot for a panel mounting option.

Colored and keyed connectors options

Protected, low-profile positive latch

Meets the UL 1230 standard

Deliver an IP68-sealed rating

Offer design flexibility for 3, 5, 7 and 9 circuit needs

Weather caps

MARKETS



Consumer



Commercial
Vehicle



Industrial
Automation

LEARN MORE



ENHANCEMENT

Mini-Lock 2.5 - Adding Black color and Glow Wire Versions

SERIES
51163, 53517, 53426



The 2.50mm-pitch Mini-Lock Wire-to-Board/Wire-to-Wire Connector System offers design versatility with vertical and right-angle SMT headers, and terminal position assurance (TPA) while also providing Glow Wire options for safety and protection in the home appliance market.

FEATURES

Glow Wire capable

Potting treatment (Height 2.00 to 6.00mm)

Locating Peg (Boss)

Use of popular crimp terminals

Terminal position assurance (TPA)

MARKETS



Industrial



Consumer



Home
Appliance



Automotive

LEARN MORE



ENHANCEMENT

RAST R-Power Connector Systems

SERIES
220958, 220330



RAST Power and R-Power Connector Systems deliver up to 10.0A, and provide options for design flexibility and secure mating with overall cost savings for manufacturers.

FEATURES

RAST R-Power: up to 10.0A

Direct and indirect mating

Standard and opposite PCB layout options

Glow-wire, UL, CSA and VDE approved

PCB headers have staggered footprint

Passive latch/internal latch

MARKETS



Automotive



Appliances

[LEARN MORE](#)



ENHANCEMENT

Micro-Lock Plus 1.25mm-Pitch - Adding TPA

SERIES

214526, 214527, 214528, 214529



Ideal for compact applications, the Micro-Lock Plus 1.25mm-Pitch Connector System provides electrical and mechanical reliability, design flexibility and secure mating retention to overcome challenges in high-temperature designs.

Adding TPA to the 1.25mm-pitch connectors helps ensure that terminals are correctly seated in the connector for a reliable connection.

FEATURES

Wide positive latch that delivers audible click

A wire-to-wire solution and single and dual rows, 2 to 42 circuits, vertical and horizontal plug configurations

Withstands up to 105°C operating temperature

Dual-contact terminal design

Robust metal solder tab

Potting liquid (up to 6.00mm height)

MARKETS



Industrial
Automation



Appliances



Automotive

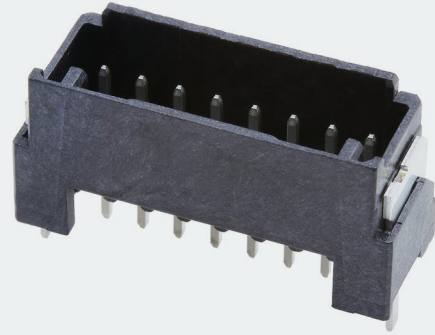
LEARN MORE



ENHANCEMENT

Micro-One Through-Hole Connectors

SERIES
220030, 220029



As the need for contact reliability in compact, harsh-environment applications grows, Molex's Micro-One Through-Hole Connectors provide a robust 2.00mm-pitch solution for components to withstand severe conditions, offering integrated independent secondary lock (ISL), potting capabilities and Glow Wire capable options.

FEATURES

Offers reduced weight and space savings with low profile design

UL certification helps ensure reliability

Vertical and right-angle headers with 2 to 8 circuit provide design flexibility

Glow Wire capable: Meets the required EU regulations for the home appliance market

MARKETS



Consumer



Industrial

[LEARN MORE](#)

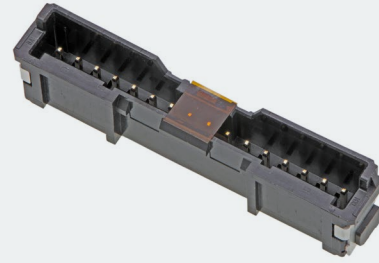


ENHANCEMENT

Micro-Lock Plus 2.00-Pitch

SERIES

5705575, 505578, 505572



Ideal for compact applications, the Micro-Lock Plus Connector System provides electrical and mechanical reliability, excellent space savings and robust solutions in a high-temperature design to meet stringent industry requirements including those in harsh environments.

FEATURES

Offers design flexibility with a single-row plug in vertical and horizontal configurations, and 2-16 circuits

SMT terminal helps prevent whiskering for a clean and uninterrupted signal

Provides secure PCB retention and strain relief to solder joints with robust metal solder tab

Low-halogen and high-temperature capability withstands harsh environments

Positive lock delivers secure mating retention without sacrificing compactness

Outer lock strengthens lock for more reliable connections

Wide positive latch with an audible click provides secure mating retention and helps ensure proper mating connection

MARKETS



Datacom



Consumer



Automotive

[LEARN MORE](#)



ENHANCEMENT

Brad EtherNet/IP CIP Safety HarshIO Modules

SERIES
112095



Featuring CIP Safety technology, Brad EtherNet/IP CIP Safety HarshIO Modules are IP67 IO modules designed for connecting industrial safety controllers to sensors and actuators in harsh duty environments to permit the durable and reliable automation of safety systems.

FEATURES

Module is IP67-rated for dust and water resistance, is potted with resin and uses metallic connectors

Conforms to EN 61508 SIL3 and Cat4 PLe according to ISO 13849-1 with a mission time exceeding 20 years

Reduces commissioning time with Ultra-Lock™ M12 push-to-lock technology

Enhances versatility and design flexibility with multiple options available

Meets environmental demands with commercial- and industrial-grade options

Speeds module replacement while eliminating special tools or recommissioning

Permits users to quickly and easily determine status

MARKETS



Automotive



Industrial
Automation

LEARN MORE



ENHANCEMENT

Micro-Fit+ Single-Row, Wire-to-Wire Connectors

SERIES
223794



Adding single-row and wire-to-wire plugs to the Micro-Fit+ Connector System allows engineers more design flexibility. These high-current, small connectors now have a single row option for increased space savings that solve space-constrained issues designers face. The new wire-to-wire feature helps engineers overcome design limitations, which gives them additional application options. Micro-Fit+ Connectors also offer 40% reduced mating force for improved design flexibility and increased assembly efficiency.

FEATURES

Fully isolated contacts on each side of the interface

V-0/Glow Wire combination resin

Enhanced Terminal Position Assurance (TPA) design

Unique keying design prevents mis-mating; different than standard Micro-Fit 3.0

Surface-Mount Technology (SMT) and Through-Hole Technology (THT) headers

Reduced mating force of 40%

MARKETS



Medical



Sustainable
Energy



Consumer



Automotive



Telecommunications/
Networking

LEARN MORE



EXTENSION

EXTreme Guardian Plug-Side Overmolded Cable Assemblies

SERIES
218055



EXTreme Guardian plug-side overmolded cable assemblies, available in multiple circuit sizes and lengths, meet ever expanding power requirements for a range of networking and datacom equipment while providing rugged strain relief at the connector and cable interface.

FEATURES

Dependable strain relief

2- and 3-circuit options

Polarized mating geometry and locking tang-on terminals

Available in multiple lengths

Capable of carrying 55.0 to 60.0A of current

MARKETS



Aerospace and
Defense



Medical



Telecommunication



Automotive



Solar



Data
Communication

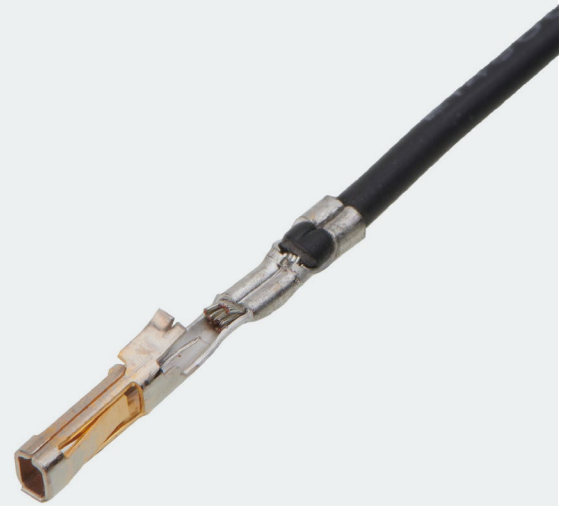
LEARN MORE



EXTENSION

Off-the-Shelf (OTS) SL Pre-Crimped Leads

SERIES
219680, 219681



SL Pre-Crimped Leads are a new addition to Molex's range of pre-crimped leads offering a simple, cost-effective solution for prototyping, pre-production and mass production requirements.

FEATURES

Available in 75, 150, 225, 300, 450mm lengths

UL Listed cables (UL 1061, UL 11028)

22, 24, 26, 28 AWG

Pre-crimped and fully tested cables

MARKETS



Home
Appliance



MedTech



Telecommunications/
Networkings



Automotive



Industrial
Automation

LEARN MORE



EXTENSION

Mini-Fit Max Single Row Connectors

SERIES
212515, 215913, 215915



Transcending mid-power connector products, the Mini-Fit Max wire-to-board connector provides 20.5A of current in a compact package and features a robust tangless terminal design with a TPA capable receptacle. New Single-Row options - now available in circuit sizes 2 to 6.

FEATURES

94/V-O Glow-wire combination resin
Keying and polarization
Optional TPA with TPA stop
Slim profile design

End-to-end stackable
Four independent points of contact
Tangless terminal
Single-row options

MARKETS



Telecommunications/
Networking



Home
Appliance



Commercial
Vehicles



Industrial

LEARN MORE

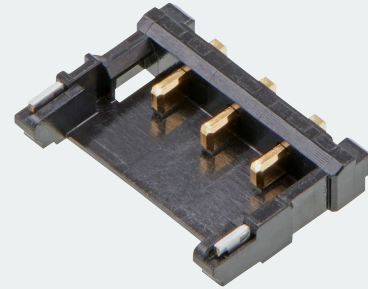


EXTENSION

Pico-EZmate 1.80mm High-Current (HC) Wire-to-Board Connectors

SERIES

208294, 208298, 208299



The latest addition to the Pico-EZmate family are the Pico-EZmate 1.80mm HC Wire-to-Board Connectors offering a high current rating of 5.0A and a compact design for excellent performance in tight-space applications across various industries.

FEATURES

Low profile and compact size

High current of 5.0A

Reinforced locking force

Polyamide material

Designed for battery connections

Ergonomic mating and unmating in the diagonal direction

MARKETS



Consumer



Medical



Home Appliances



In-Vehicle Infotainment



Data Center



Mobile Devices

LEARN MORE



EXTENSION

Application Tooling

63808, 203702, 213309, 213069, 215786



Representative images

Using the proper interconnect manufacturer's application tooling is essential to meet many of the industry standards and to maintain the connector manufacturer's product warranty.

Molex offers various tools from simple insertion and extraction tools, through to crimp modules and dies. The latest additions to the Molex application tooling range include:

Hand tools

Hand crimp tools, insertion and extraction tools, and more. Manually powered hand tools for low-volume use or field repair with loose piece packaging formats.

Applicators

Designed to industry-standard mounting and 135.80mm (5.346") shut height. Easy to set up and simple adjustments to ensure optimal crimps. Compatible with most industry-standard benchtop crimping presses and wire processors for mid-volume crimping solutions. Mechanical and pneumatic feed options are available.

RESOURCES



Crimping Tools
Catalog



Datasheets



Important Tooling
Information

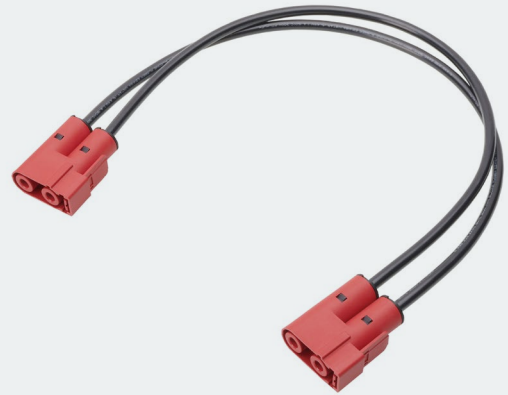
LEARN MORE



EXTENSION

Off-the-Shelf (OTS) PowerWize Cable Assemblies

SERIES
221960



OTS PowerWize Cable Assemblies offer complete design flexibility and unique design features to facilitate both prototyping and global preproduction.

PowerWize High-Current Wire-to-Board/Wire-to-Busbar Connectors leverage our Coeur socket technology to ensure low contact resistance, low voltage drop and minimal heat generation at the contact interface.

FEATURES

Mechanically keyed and color coded with uniquely positioned ribs on header housings and matching slots on receptacles (based on connector color)

Positive locking with active latches on receptacles and barbed geometry on headers

Finger touch-safe headers and receptacles

MARKETS



Industrial



Data Center



Telecommunications/
Networking



Test and
Measurement

LEARN MORE



EXTENSION

Off-the-Shelf (OTS) PowerWize Pre-Crimped Leads

SERIES
221960



Molex's range of pre-crimped leads offers a simple, cost-effective solution for prototyping, pre-production and mass production requirements. The PowerWize pre-crimped leads are offered in female-to-female and female-to-pigtail configurations in 600.00mm length.

PowerWize High-Current Wire-to-Board/Wire-to-Busbar Connectors leverage our Coeur socket technology to ensure low contact resistance, low voltage drop and minimal heat generation at the contact interface.

FEATURES

600mm cable length

UL listed cables (UL 10198)

Pre-crimped and fully tested

Female-female and female-strip configurations

MARKETS



Industrial



Data Center



Telecommunications/
Networking



Test and
Measurement

LEARN MORE



EXTENSION

USB Type-C Connectors

SERIES

221608, 221610, 221632, 218847, 219320



The expanded family of compact USB Type-C Connectors from Molex helps meet the need for standardized high-speed I/O connectors in an increasingly diverse range of applications. USB Type-C Connectors support up to 5.0A of current and 10 Gbps data transfer speeds. They offer waterproof, robust, reliable and reversible connectivity options for consumer, industrial and Internet of Things (IoT) devices as well as other high-speed I/O applications.

New additions to the USB Type-C product line include 16- and 24-circuit connectors meeting USB 2.0 and 3.2 standards. Molex offers customers various configurations, orientations, and mounting options for both plugs and receptacles.

FEATURES

Up to IPx8 rating

Shorter body design

Supports 5.0A/100W power and up to 10 Gbps data rates

Offers waterproof, robust, reliable connectivity

MARKETS



Consumer



Aviation



Medical



Automotive



Connected Home

[LEARN MORE](#)



EXTENSION

Premo-Flex FPC 0.50mm-Pitch One-Touch LVDS Jumper Cables with Latching Notches

SERIES
15026



Premo-Flex FPC One-Touch Low-Voltage Differential Signal (LVDS) Jumper Cables with Latching Notches and 100-Ohm controlled impedance deliver durable and flexible PCB connection solutions, including custom and off-the-shelf options.

FEATURES

Multiple standard circuit counts

Locking notches

Various off-the-shelf cable lengths

Mating capability with One-Touch FPC Connectors in series 200485-06XX and 200485-07XX** (XX** designates the number of circuits)

Controlled impedance

MARKETS



Consumer



Home
Appliance



Medical



Automotive



Data/
Computing



Industrial

LEARN MORE



EXTENSION

EXTreme Ten60 High-Power Connectors, Split-power

SERIES
171088, 171089, 171090



Designed for configurable power connections with flexibility for voltage creepage and clearance requirements, EXTreme Ten60 High-Power Connectors offer custom connector layouts and standard blade options to streamline designs in various applications.

FEATURES

Top or side guides

Low-profile design (10.00mm)

Configurable with dovetail design

Press fit or solder tail

Blade and signal length options

PCB polarizing pegs

MARKETS



Data
Communications



Telecommunications/
Networking



Consumer
Electronics



Electric
Vehicles

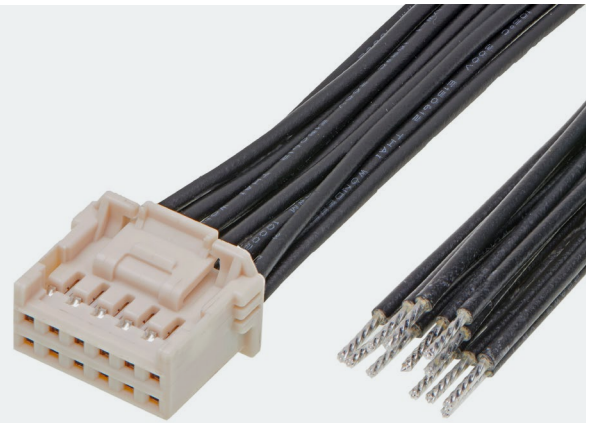
LEARN MORE



EXTENSION

Off-the-Shelf (OTS) iGrid Cable Assemblies

SERIES
221955, 221956



iGrid Cable Assemblies deliver off the shelf (OTS) solutions with pin-to-pin mapping from receptacle to PCB header and meet current cable assembly industry standards. Provides ready to use, plug and play connections; ensures high quality and meets current automotive industry standards. Available in a variety of cable lengths to facilitate both prototyping and global production.

FEATURES

UL 10002 Discrete Wires

Meet 2011/65/EU RoHS Compliance

Pin-to-Pin mapping from receptacle to PCB header

Meet current cable assembly industry standards

Custom assemblies for production also available

MARKETS



Data/
Computing



Consumer



Industrial



Automotive

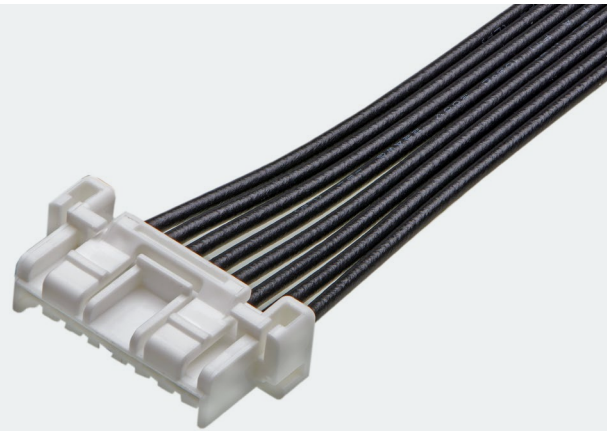
LEARN MORE



EXTENSION

Off-the-Shelf (OTS) CLIK-Mate 2.0 Cable Assemblies

SERIES
221958, 221959



CLIK-Mate Discrete Wire Cable Assemblies deliver off-the-shelf (OTS) solutions and a variety of cable lengths to facilitate both prototyping and global production.

FEATURES

UL 1061 discrete wires

Meet 2011/65/EU RoHS Compliance

Assembled in ISO/TS16949-certified facilities

Pin-to-pin mapping from receptacle to PCB header

MARKETS



Consumer



Commercial
Vehicle



Medical

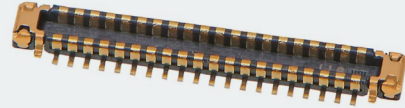
LEARN MORE



EXTENSION

SlimStack Board-to-Board Connector ACB6+, 40Ckt

SERIES
216701



SlimStack Board-to-Board Connectors, 0.35mm-Pitch, 0.60mm-Height, Full-Armor ACB6+ Series, deliver excellent performance with up to 5.0A power-nail, full-armor housing protection. Together with mating guidance and electrical contact assurance, SlimStack offers superior reliability in challenging applications.

FEATURES

Power nail structure enables power delivery up to 5.0A

Full armor design that wraps connector from inside and outside

Wide alignment area

Contact area separated from solder area; terminal and nail are separated with a Nickel barrier

Gold flash on the top surface of the plug nail and contact terminal helps prevent solder wicking and interference

Distance between nail and signal contact helps prevent short circuits

MARKETS



Consumer



Defense



Medical Devices

LEARN MORE



EXTENSION

Sentrality High-Current Pin and Socket Interconnect System

Now Available in 3.4mm, 6mm, 8mm and 11mm

SERIES

204313, 204316, 212194, 212195,
213680, 213780, 213880, 213953



Molex's Sentrality High-Current Pin and Socket Interconnect System offers high-current board-to-board, busbar-to-board and busbar-to-busbar connectors and provides a +/- 1.00mm radial self-alignment to overcome tolerance stack-up issues.

FEATURES

Low contact resistance

Compact conical socket design

Self-aligning sockets float between wave springs

The eye-of-needle sockets and the surface-mount sockets attach to printed circuit boards; the knurled press-fit sockets attach to busbars

Top-entry socket assemblies and bottom-entry socket assemblies

Knurled press-fit pins and screw-mount pins packed in trays

Surface-mount sockets with pick-and-place caps are packed in tape-and-reel arrangements

Socket assembly's flange can be positioned anywhere along the side of the part

MARKETS



Telecommunications/
Networking



Industrial
Automation



Data
Center

LEARN MORE



EXTENSION

Optical Splice Protection Sleeves

SERIES
106920



As the number of fiber-to-home applications grow there is increased market demand for optical splice protection. Furthermore, customers require high performance after splicing in order to avoid bending or breakage of fibers. The Optical Splice Protection Sleeves use good quality materials and full fuse function, with inner-sleeve ethylene vinyl acetate to provide a moisture-resistant barrier after shrinkage and afford fusion splice protection in field fiber splicing assembly, manufacturing and optical fiber closure applications. These products are optimally positioned to help solve capacity shortages for splice sleeves resulting from increased demand.

FEATURES

Stainless Steel Rod as a Tension Member
Provides additional rigidity to prevent bending or breakage of fiber

Full Fusion Splicing
Provides full fusion protection after shrinkage

MARKETS



Consumer



Telecom



Defense

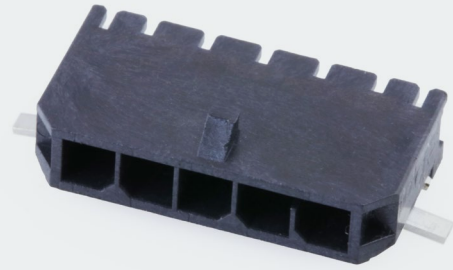
LEARN MORE



EXTENSION

Micro-Fit+ Connector, SMT Header Assemblies - Extended sizes

SERIES
218989, 218216



The Micro-Fit+ Connector System offers a 3.00mm pitch, a high current rating of 13.0A and superior design options for flexibility and efficient assembly.

FEATURES

Fully isolated contacts on each side of the interface

Reduced mating force by 40%

Unique keying design

Fully polarized housings

V-0/Glow Wire combination resin

Smaller PCB footprint

MARKETS



Sustainable
Energy



Telecommunications/
Networking



Consumer



Medical



Automotive

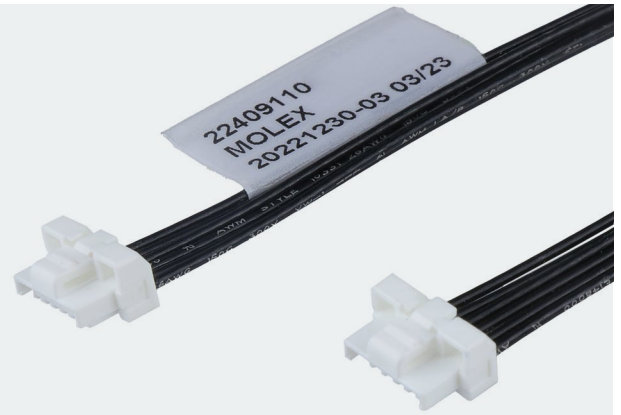
LEARN MORE



EXTENSION

Off-the-Shelf (OTS) CLIK-Mate 1.25 Cable Assemblies

SERIES
224091, 224092



CLIK-Mate Discrete Wire Cable Assemblies deliver off-the-shelf (OTS) solutions and a variety of cable lengths to facilitate both prototyping and global production.

The CLIK-Mate 1.25 Cable Assembly carries 1.0A with a 1.25mm pitch offering more signal lines in less space.

FEATURES

Offers more signal lines in less space

Ready to use in electronic appliance applications - provides ease of design, prototyping and production

Decreases engineering time and resources

Provides ready-to-use, plug-and-play connections

MARKETS



Consumer



Commercial
Vehicle



Medical

LEARN MORE



EXTENSION

MX150 Hybrid Sealed Connector System, adding Hybrid Mat-Sealed Blade Connectors

SERIES
160077, 160079, 160081



Molex's MX150 Hybrid Sealed Connector System offers outstanding flexibility and space savings by integrating 1.50, 2.80 and 6.30mm terminals into one package for a complete solution.

FEATURES

Mat seal technology for MX150 (1.50mm) terminals

Connector position assurance (CPA) option available

Preassembled terminal position assurance (TPA) housing

Four key options available

One-piece 3.50mm-pitch housing

MARKETS



Automotive



Commercial Vehicle



Industrial Automation

LEARN MORE



EXTENSION

Premo-Flex (FFC) Ultra-Flexible Cable Jumpers

SERIES
15120



Adding Series 15120 - 0.50mm Pitch, Gold-Plated

The versatile Premo-Flex solution now includes the new 15120 series with gold plating, a 0.50mm pitch and a 0.35A current rating, to deliver 2.5M flex life cycles in a variety of applications.

Premo-Flex Flat-Flexible Cable (FFC) Ultra-Flexible Cable Jumpers deliver durable and ultra-flexible PCB connection solutions with an extensive range of custom and off-the-shelf options. These jumpers enable designers to maximize PCB space, reduce component costs and provide devices with reliable board-to-board connections.

FEATURES

Enables versatile configurations

Terminates to fully mate with a wide range of Molex Easy-On connectors

Permits use in a variety of applications

Product offerings range from 50,000 to 2.5 million flex life cycles

Includes off-the-shelf options for faster time to market

MARKETS



Consumer



Datacom



Medical



Automotive



Industrial

LEARN MORE



EXTENSION

Off-the-Shelf (OTS) MX64 Pre-crimped Leads

SERIES

224540, 224541, 224563,
224564, 224565, 224566



Molex's range of pre-crimped leads offers a simple, cost-effective solution for prototyping, pre-production and mass production requirements.

The MX64 Pre-crimped leads are offered in female-to-female configurations and lengths of 150, 300 and 450mm.

FEATURES

Offers secure terminal retention and superior reliability

Eliminates the need for individual wire seal, improving production time and ruggedness

Supports US and offshore wire requirements

Locks terminals in place and prevents terminal backouts for secure connections

Eliminates mating and assembly errors Color-coded to correspond to polarity

Facilitates secure mating

MARKETS



Automotive

[LEARN MORE](#)



EXTENSION

Off-the-Shelf (OTS) Mini-Fit Versa Cable Assemblies

SERIES
224094, 224095



OTS Mini-Fit Versa Assemblies offer complete design flexibility and unique design features to facilitate both prototyping and global preproduction.

Panel mount and vertical header options available in 4 circuit sizes (2,4,6,8ckt) and 3 pitch sizes (150, 300 & 600mm).

FEATURES

Maintains current rating through application surfaces or panels

Reduces the cost of materials and labor, and allows customers to meet the European standard for electrical requirements

Provides superior retention

MARKETS



Industrial



Consumer



MedTech



Automotive

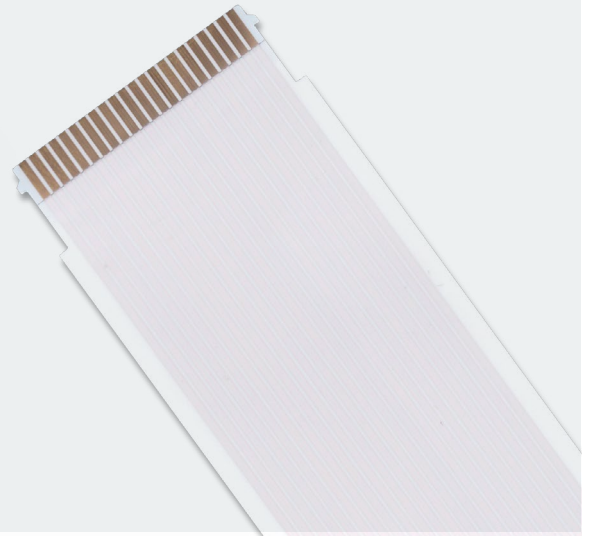
[LEARN MORE](#)



EXTENSION

Premo-Flex FFC Superior Retention Cable Jumpers

SERIES
15019, 15467



Adding: 1.00mm-pitch FFC jumpers with latching ears

Premo-Flex Flat-Flexible Cable (FFC) Superior Retention Cable Jumpers deliver robust and secure PCB connection solutions with an extensive range of custom and off-the-shelf options. These jumpers enable designers to ensure reliable connectivity in high-vibration or high-shock environments for a variety of applications.

FEATURES

Enables secure connectivity in high-vibration and high shock environments

Terminates to full mate with a wide range of Molex Easy-On connectors

Permits use in a variety of applications

Includes off-the-shelf options for faster time to market

MARKETS



Datacom



Automotive



Medical



Consumer



Industrial

LEARN MORE



EXTENSION

Off-the-Shelf (OTS) MicroTPA 2.00mm Cable Assemblies

SERIES
224482, 224483



Ideal for compact applications, the MicroTPA 2.00mm Wire-to-Board and Wire-to-Wire Connector System provides electrical and mechanical reliability in a high-temperature design that meets a diverse range of industry requirements.

OTS MicroTPA Cable Assemblies deliver an off-the-shelf (OTS) solution in a variety of cable lengths to facilitate both prototyping and global production.

FEATURES

Meets current cable assembly industry standards

Meets 2011/65/EU RoHS Compliance

UL 10002 Discrete wires

Pin-to-Pin mapping from receptacle to PCB header

MARKETS



Appliances



Automotive

LEARN MORE



EXTENSION

Off-the-Shelf (OTS) Stac64 Pre-Crimped Leads

SERIES

224451, 224452, 224572



The Stac64 is stackable connection system that provides single and multi-pocket PCB solutions. It offers a diverse range of circuit sizes and greatly reduces time-to-market by eliminating the need for custom tooling.

The Stac64 is now offered as part of the Molex range of pre-crimped leads, offering a simple, cost-effective solution for prototyping, pre-production and mass production requirements.

FEATURES

150, 300, 450mm cable lengths

Female-to-female configurations

18, 20 Wire Gauge (AWG)

Wire/Cable Type: FLRYW

MARKETS



Automotive

[LEARN MORE](#)

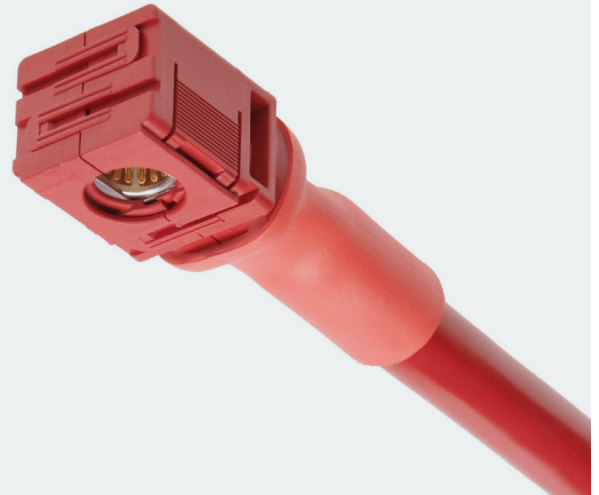


EXTENSION

Off-the-Shelf (OTS) SW1 Cable Assemblies

SERIES

224355, 224356, 224357, 224411,
224412, 224413, 224414, 224415,
224416



Off-the-Shelf (OTS) SW1 Cable Assemblies deliver solutions with a broad offering of Molex connectors and incorporate COEUR socket technology which enables a high-current-carrying capacity in three sizes: 6.00mm (120.0A), 8.00mm (185.0A) and 11.00mm (300.0A) with a unique positive-locking design for secure mating.

FEATURES

Reliable crimp geometry with high-quality 8-sided crimp profile

Positive-locking stainless steel spring clips

Color-coded receptacle housings

Meets 2011/65/EU RoHS Compliance

UL 10002 Discrete wires

MARKETS



Energy
Storage



Industrial
Automation

[LEARN MORE](#)



EXTENSION

Off-the-shelf (OTS) Mini-Fit Max Pre-Crimped Leads

SERIES
224087, 224088



Molex's range of pre-crimped leads offers a simple, cost-effective solution for prototyping, pre-production and mass production requirements. Mini-Fit Max leads are offered in female-to-female configurations in lengths of 150, 300 and 450mm.

FEATURES

150, 300, 450mm cable lengths

Female-to-female configurations

2.00 Wire Gauge (AWG)

Wire/Cable Type: UL1569

MARKETS



Industrial



Home
Appliance



Commercial
Vehicle



Telecommunications/
Networking

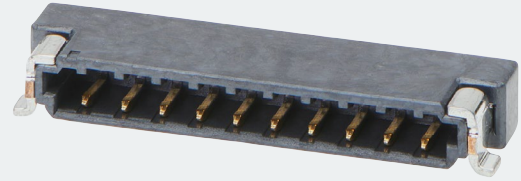
LEARN MORE



EXTENSION

Zero-Hachi 0.80mm Pitch Wire-to-Board Connector System - Adding Gold (Au) Plating

SERIES
214720, 214721



The Zero-Hachi connector's fine pitch, low-profile height and extensive circuit size range address the concerns of shrinking electronic device space across industries, while the feature enhances electrical reliability during operation.

Now available in Gold (Au) plating version providing higher electrical performance with robustness.

FEATURES

Fitting nail

Dual-point contact design

Low-profile height (1.60mm)

Easy-to-grip design feature

'Checking-mark' feature on crimp housing

Friction lock on crimp housing

MARKETS



Industrial
Automation



Mobile Devices



Home Appliance

LEARN MORE



EXTENSION

Solderless RF/Microwave PCB Connectors

SERIES
73387, 73157, 73164



Solderless RF/Microwave PCB Connectors from Molex offer a reusable, compact and easy-to-install radio frequency connection to the PCB or microstrip for high-density, high-precision test and measurement applications.

FEATURES

Solderless installation method permits easy removal and reuse

Screw attachment method simplifies installation and removal on edge of PCB

Narrow-block compact design requires a smaller footprint

Center contact parallel to the signal trace enhances electrical performance

Enhanced flexibility with a range of size and frequency options

MARKETS



Telecommunications/
Networking

LEARN MORE



EXTENSION

Micro-Fit + Versa Connectors

SERIES

212528, 224246, 206461, 215922,
215759, 216571, 215760



Micro-Fit + Versa Connectors provide a 3.00mm pitch for space-constrained applications and offer a variety of design options, including polarization and four colors with different keying per color to avoid mis-mating, and help ensure operational safety and efficient assembly.

FEATURES

Withstands high-vibration environments

Four new color-keyed options added to the existing black color, offering a total of 4 different polarizations

Glow Wire capable: Meets the required EU regulations for the home appliance market

Through-hole technology (THT) headers, plug and receptacle

Unique keying design offers easier identification and increased safety

MARKETS



Automotive



Medical



Telecommunications/
Networking



Consumer

LEARN MORE



EXTENSION

Off-the-Shelf (OTS) Zero-Hachi Pre-Crimped Leads

SERIES
219672, 219673



Molex's range of pre-crimped leads offers a simple, cost-effective solution for prototyping, pre-production and mass production requirements. Zero-Hachi Pre-Crimped Leads leads are offered in female-to-female and female-to-pigtail configurations in lengths of 150, 300 and 450mm.

The Zero-Hachi connector's fine pitch, low-profile height and extensive circuit size range address the concerns of shrinking electronic device space across industries. The connector's dual-point contact feature enhances electrical reliability during operation.

FEATURES

Leads crimped on both ends: Suitable for wire-to-wire applications and when cut in half wire-to-board applications

Connector A: Female; Connector B: Female, Strip and Tin

150, 300, 450mm cable lengths

28, 30 Wire Size (AWG)

Wire/Cable Type: 10064

MARKETS



Home
Appliance



Industrial
Automation



Mobile Device

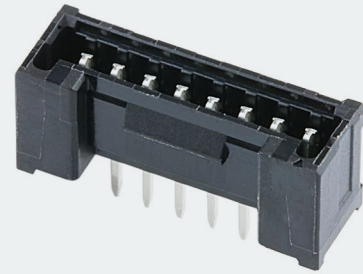
LEARN MORE



EXTENSION

Micro-Lock Plus 1.25mm-Pitch Connector

SERIES
220097, 220098



Ideal for compact applications, the Micro-Lock Plus 1.25mm-Pitch Connector System provides electrical and mechanical reliability, design flexibility and secure mating retention to overcome challenges in high-temperature designs. Now available with vertical and right angle Through-Hole header housing options.

The Micro-Lock Plus is the only 1.25mm pitch through-hole housing with positive locking features. This housing provides a boss for guided mounting, and, even without a nail, keeps the product size small while providing the same locking strength to Surface-Mount types.

FEATURES

Provides secure mating retention; ensures proper mating

Strengthens lock for more reliable connection with outer lock for single-row version to secure mating retention

Meets other industry standards for harsh environments by withstanding up to 105°C operating temperatures

Offers additional design flexibility in a smaller size

Offers secure contact and terminal retention (can use existing mating parts)

Reduces assembly error that results in terminal back-outs

MARKETS



Home
Appliance



Industrial
Automation



Automotive

LEARN MORE



EXTENSION

Off-the-Shelf (OTS) KK Plus 250 Discrete Wire Cable Assemblies

SERIES
224089, 224090



The KK Plus 250 Cable Assembly offers a 2.50mm pitch and is available in a variety of cable lengths. OTS Discrete Wire Cable Assemblies were designed with the largest wire gauge that connectors can accommodate to meet any prototype requirement on the market. Discrete Cables reduce engineering (mechanical and electrical) and purchasing time needed to qualify a cable. In addition, they are crimped in an automated press eliminating the risk of poor crimping during prototyping. These cables are great for prototyping all the way into mass production.

FEATURES

2.50mm pitch

150, 300, 600mm cable lengths

MARKETS



Industrial
Automation



Automotive



Home
Appliance



Telecommunications/
Networking

LEARN MORE



EXTENSION

Off-the-Shelf (OTS) Mini-Fit Max Cable Assemblies

SERIES
224085, 224086



Mini-Fit Max Cable Assemblies offer a 4.20mm pitch and are available in a variety of cable lengths. These cable assemblies support compact and high-power application demands for adaptable performance and long-term reliability. Off-the-Shelf (OTS) Discrete Wire Cable Assemblies were designed with the largest wire gauge that connectors can accommodate to meet any prototype requirement on the market. Discrete cables reduce engineering (mechanical and electrical) and purchasing time needed to qualify a cable. In addition, they are crimped in an automated press - eliminating the risk of poor crimping during prototyping, all the way into mass production.

FEATURES

4.20mm pitch

Available in 2, 4, 6, 8, 10 circuits

150, 300, 600mm cable lengths

Dual-row

MARKETS



Telecommunications/
Networking



Industrial



Home
Appliance



Commercial
Vehicle

LEARN MORE



EXTENSION

Off-the-Shelf (OTS) Micro-Fit+ Pre-Crimped Leads

SERIES
36769



Molex's range of pre-crimped leads offers a simple, cost-effective solution for prototyping, pre-production and mass production requirements. Micro-Fit+ pre-crimped leads are offered in female and male configurations in lengths of 300.00mm.

FEATURES

300mm cable length

16, 20, 24 Wire Size (AWG)

Connector A: Female, Male, Connector B: Strip and Tin

Cable/Wire Type: UL 1061 (16AWG), UL 11028, (20AWG, 24AWG)

MARKETS



Consumer



Sustainable
Energy



Telecommunications/
Networking



MedTech

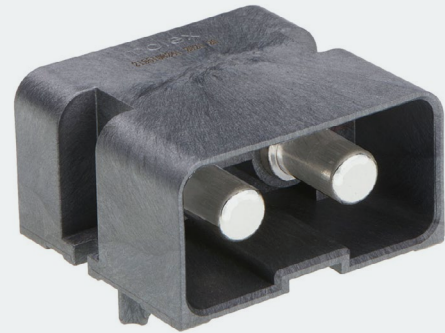
LEARN MORE



EXTENSION

PowerWize BMI High Current Panel-to-Board/ Busbar Interconnects

SERIES
215510, 215511, 215513



PowerWize BMI (Blind Mate Interface) High-Current Panel-to-Board/Busbar Interconnects incorporate Molex's COEUR socket technology, which helps ensure low contact resistance at the mating interface to minimize heat generation and enable high current-carrying capacity.

FEATURES

Blind-mating/Self-aligning Connectors

Optimal current-carrying capacity with multiple contact beams

Screw-mount pins attached to both printed circuit boards and busbars; solder tail pins attached to printed circuit boards

User-friendly cable assembly build

Field installable battery-powered applicators

Reliable crimp geometry eight-sided crimp profile

MARKETS



Telecommunications/
Networking



Data Center



Electrical Vehicle
Charging Stations

LEARN MORE



Heilind Electronics is a leading global distributor of electronic components and authorized distributor for Molex.

HEILIND

molex

HEILIND

molex

Molex is a registered trademark of Molex, LLC in the United States of America and may be registered in other countries; all other trademarks listed herein belong to their respective owners.